

Probes

for the dose rate measuring system X5C plus

- PTB-approved gamma probes for the measurand \dot{H}^* (10) (ambient dose equivalent rate) and pulse probes (see back page) for extending the measuring range of the basic unit
- for measurements at „hard-to-get-to“ places
- Telescope Probe DE for measurements from a safe distance at high dose rates (see separate documentation)

PTB-approved gamma probes

- automatic probe identification by the basic unit
- connectible to the basic unit either directly or by using a probe cable up to a max. length of 100 m (standard length: 1,25 m)
- the basic unit automatically takes over the probe specific calibration factor
- the basic unit either displays the measurand \dot{H}^* (10) or H_x for all dose rate probes; in case of connected PTB-approved \dot{H}^* (10) dose rate probes the PTB-symbol additionally appears on the display
- the basic unit automatically displays the detected type of radiation
- underwater measurements up to a depth of 30 m by using the pressurized water protective housing



Type	Energy range	Measuring range ¹⁾	Measuring size	PTB-Approval	Dimensions Weight
18509 CE	55 keV-1,3 MeV	50µSv/h-1Sv/h	H*(10)	23.71 / 05.01	length 110 mm Ø 40 mm 150 g
18529 CE	70 keV-3 MeV	0,5mSv/h-10Sv/h	H*(10)	23.71 / 05.02	length 110 mm Ø 40 mm 150 g
18545 CE	40 keV-1,3 MeV	150 nSv/h-200µSv/h	H*(10)	23.71 / 05.03	length 345 mm Ø 25/ 40 mm 380 g
18550 CE	40 keV-1,3 MeV	10 µSv/h-20 mSv/h	H*(10)	23.71 / 05.04	length 110 mm Ø 40 mm 150 g

¹⁾ PTB-approved measuring range for measurements specifically demanded by German regulations



Distributore ufficiale per l'Italia

Extratech Engineering, Technology, Software & Training - by **3DLiFe srl**
Via Torraca, 76 - 85100 Potenza (PZ) Tel/Fax. (+39) 0971.21.432 p.iva 016.540.40.763
www.extratech.it - info@extratech.it - www.3dlife.it - info@3dlife.it

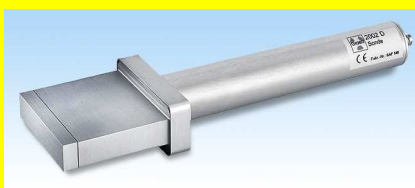
rif: Ing. Vito Lisanti cell. 329.80.380.79

Probes

for the dose rate measuring system **X5C plus**

Pulse probes

- probes for the detection of α -, β - and γ -contaminations
- high sensitive scintillation probe for the detection of β -/ γ -radiation
- glass immersion counter tube ZP1083 D for measurements in liquids
- automatic probe identification by the basic unit
- connectible to the basic unit either directly or by using a probe cable up to a max. length of 100 m (standard length: 1,25 m)
- the basic unit automatically takes over the probe specific calibration factor
- the basic unit automatically displays the detected type of radiation
- indication range on the basic unit 0-20 Kcps
- difference between gamma and pulse probes: basic unit effects a pulse rate measurement instead of dose rate measurement and a summation of triggered counts instead of dose measurement
- instead of the four dose and dose rate alarm thresholds, a pulse respectively a pulse rate alarm threshold can be set at the basic unit
- temperature range of the GM-probes: -30 °C up to +60 °C
- temperature range ABG170: -10 °C up to 40 °C
- temperature range of the Scintillation Probe: -20 °C up to +50 °C; max. temperature change 10 °C/h



Type	Type of radiation	Detector		Background* (counts/min)	Dimensions Weight
18526 D	α , β , γ	GM-tube	effective surface 6,1 cm ²	25	length 110 mm, Ø 40 mm 150 g
ZP1083 D	β , γ	GM-tube	effective length 64 mm	15	length 210 mm, Ø 50 mm 350 g
ABG170	α , β , γ	plastic scintillator	effective surface 170 cm ²	900-1500	(390x125x75) mm (handle included) 790 g
Scintillation Probe 2002 D	β , γ	NaJ(Tl) scintillator	effective volume (70x70x13) mm	6000	(80x85x35) mm with handle 200 mm 530 g

*) at 0,1 μ Sv/h

Distributore ufficiale per l'Italia

Extratech Engineering, Technology, Software & Training - by **3DLiFe srl**
Via Torraca, 76 - 85100 Potenza (PZ) Tel/Fax. (+39) 0971.21.432 p.iva 016.540.40.763
www.extratech.it - info@extratech.it - www.3dlife.it - info@3dlife.it

rif: Ing. Vito Lisanti cell. 329.80.380.79

